

Continuation of the All Town Reconciliation Strategies in the North West Province

Strategies Steering Committee Workshop No. 1

24 April 2013

Presented by Tendani Nditwani

DWA: National Water Resource Planning



Agenda

1	WELCOME AND INTRODUCTION OF MEMBERS	T. Nditwani
2	ATTENDANCE AND APOLOGIES	T. Nditwani
3	ACCEPTANCE OF AGENDA	T. Nditwani
4	PURPOSE OF WORKSHOP	T. Nditwani
5	ROLE OF THE STRATEGIES STEERING COMMITTEE	T. Nditwani
6	INTRODUCTION OF THE STUDY	T. Nditwani
7	OVERVIEW OF STUDY ACTIVITIES	M. Esterhuizen P van Rooyen
8	BREAK-AWAY SESSIONS (PRIORITY STRATEGIES)	M. Esterhuizen
9	WAY FORWARD/STUDY PROGRAMME	M. Esterhuizen
10	GENERAL	T. Nditwani
11	DATE OF NEXT MEETING AND CLOSURE	T. Nditwani
12	LUNCH	ALL

Item 4: Purpose of the Workshop

- To introduce the study to all Stakeholders (SH)
- To establish and define the role of the Strategies Steering Committee (SSC)
- Facilitate cooperation and interaction with the SH's
- To outline findings during the Inception Phase
- To outline the scope of work, methodology, way forward and preliminary study programme
- To obtain comments and input from SH's
- To prioritise the strategies to be updated

3

Item 5: Role of Strategies Steering Committee (SSC)

Role of Strategies Steering Committee (SSC)

- To provide executive guidance to the direction and outcomes of the study
- To provide supplementary information and input from a local and regional perspective
- To facilitate strategic linkages with other initiatives
- To disseminate information from study into the relevant organizations
- Incorporate strategies' recommendations into development plans such as IDP's etc.
- To facilitate the acceptance and sign-off of the updated Reconciliation Strategies

5

Stakeholder Engagement

- Communication Protocol
 - **General Enquiries**
 - Contact the Study Administrator / Liaison Officer:
 - Northern Planning Region: Ms Leoni le Roux (leonilr@uwp.co.za)
 - Central Planning Region: Mr Francis Chinyowa (francis.chinyowa@WorleyParsons.com)
 - **Study Management**
 - Contact the DWA Study Leader:
 - Northern Planning Region: Mr Tendani Nditwani (NditwaniT@dwa.gov.za)
 - Central Planning Region: Ms Dragana Ristic (risticd@dwa.gov.za)

6

Stakeholder Engagement cont.

- Communication Protocol
 - **Technical Enquiries**
 - Contact the PSP
 - Northern Planning Region Deputy Study Leader: Ms Monja Esterhuizen (monjae@uwp.co.za)
 - Central Planning Region Study Leader: Mr Pieter van Rooyen (pieterv@wvp.co.za)

7

Item 6: Introduction of the Study

Background

- Water Resources Reconciliation Strategies: To reconcile water resources with current (existing water supply schemes) and potential future water requirements
- 2004: Internal Strategic Perspective for Water Management Areas (19 in total)
- 2004: National Water Resource Strategy, First Edition
- As a result: Development of Reconciliation Strategies for Metropolitan and larger cities

9

Background cont.

- 2008: Development of Reconciliation Strategies for All Towns
 - Rudimentary strategies for all towns – improvement required
- 2012: Continuation of the DWA Planning Regions' All Town Reconciliation Strategies: Phase 1 – three year appointment (till 2015)
 - Background Information Document (BID) prepared to inform stakeholders

10

Background cont.

- Linkage to the National Water Resource Strategy (NWRS)
 - NWRS 1 (2004)
 - NWRS 1 provided overview statistics on water requirements, availability and water balances
 - Provided strategies (thematic areas) to reconcile the requirements and available resources



11

Background cont.

- Linkage to the National Water Resource Strategy (NWRS)
 - NWRS 2 (draft, 2012)
 - NWRS 2 is building on NWRS 1, not replacing it
 - Putting water at the centre of integrated development planning and decision making
 - Ensuring water for equitable growth and development
 - Protecting water ecosystems
 - Implementing water use efficiency and WC/WDM
 - Optimising water resources
 - Achieving effective water governance and Developmental Water Management

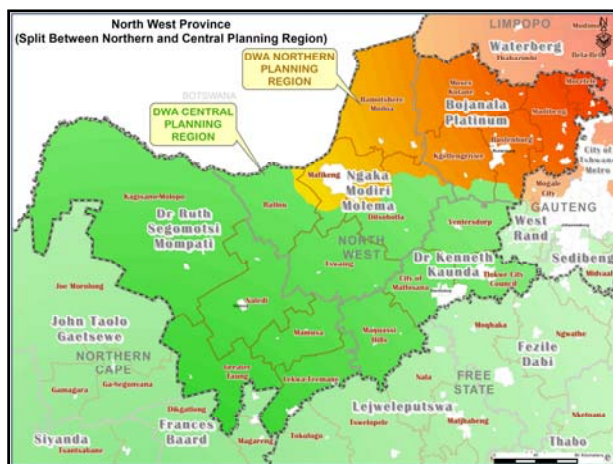
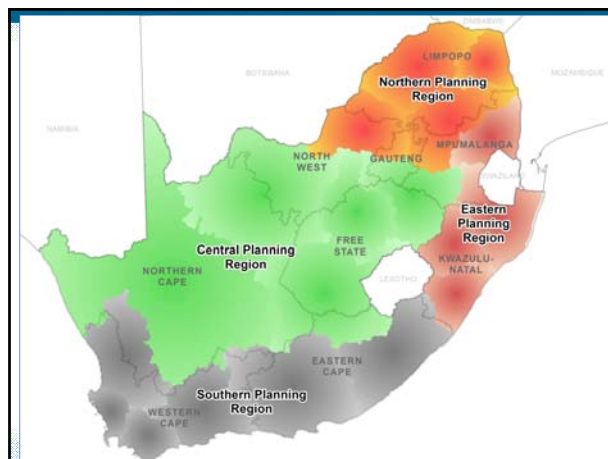


12

Background cont.

- Key general messages from All Town Studies (2009)
 - Improved management will solve largest portion of immediate problems
 - 24 Towns identified where water requirement exceed water resources availability
 - Minimal metering
 - High per capita use in many towns pointing to WC/WDM potential
 - Groundwater remains a feasible source of water for many towns
 - Infrastructure constraints rather than water resource availability limitations

13



Purpose of Study

- This assignment is the first review and updating of the strategies
- It will be an **on-going** process even after these studies end
- Assist DWA and Water Services Authorities (WSAs) to:
 - Update and revise priority strategies
 - To remain technically relevant and sustainable
 - Reconcile water requirements and water resources (up to 2035)
 - Evaluation of interventions where shortfalls occur
 - Management and/or infrastructure

16

Purpose of Study cont.

- Assist DWA and WSAs (cont.) to:
 - Align strategies with known development planning processes
 - Provide recommendations for the sustainable management of water resources
- Promote the use of strategies' information in the local, district and national planning environments

17

All Town Reconciliation Strategies What is it?

- Plans of action or policy designed to ensure sufficient water is made available to towns over the next 30 years.
- Uses existing information collected (building blocks) on
 - water requirements
 - water use and infrastructure
 - water resources
 - WC/WDM
- Develop scenarios to meet water requirements for current and future use, including optimisation of local resources, improved water services and water resource management

18

All Town Reconciliation Strategies

What is it? Cont.

- It aims to answer these questions:
 - How much water is needed? - now and in the future
 - What water resources are available or can be made available?
 - Which interventions can be considered to achieve a balance between water needs and supply?
- Focuses on the projected annual water balance (high and low growth scenarios)
- Also consider the accuracy of all components that make up the water balance

19

Reconciliation Strategies: Contents

EXECUTIVE SUMMARY

- | | |
|---------------------------------|--|
| 1 Introduction | 6 Water Balance |
| 2 Population and Demographics | 7 Water Supply Infrastructure |
| 3 Current Water Requirements | 8 Sanitation |
| 4 Water Requirement Projections | 9 Reconciliation Options |
| 5 Water Resources | 10 Water Balance – With Reconciliation Options |
| | 11 Recommendations |

20

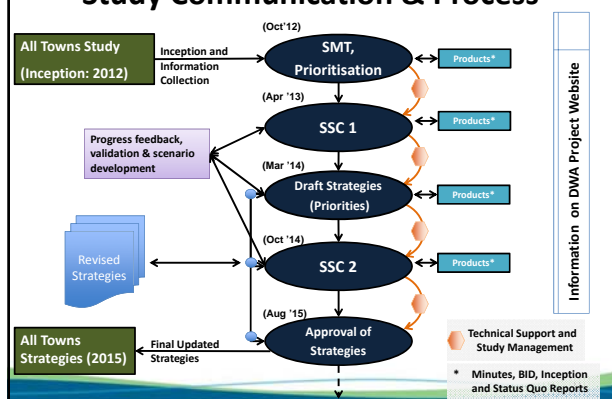
Item 7: Overview of Study Activities

Study Phases

- Inception
- Updating Priority Reconciliation Strategies
- Incorporate Comments and Finalise Reconciliation Strategies
- Study Closure

22

Study Communication & Process



Inception

- Inception
 - Establish Study Management Teams (SMT)
 - Reconnaissance review of strategies
 - Develop District Municipality Summary Reports
 - Preliminary prioritisation of strategies
 - SSC Workshop 1 (this workshop)
 - Inception Report with adjusted project programme and applicable study budget

24

1. Study Management Team (North)

- Northern Planning Region
 - DWA Study Leader: Mr Tendani Nditwani - Chief Water Resource Planner: NWRP (North)
 - DWA Regional Offices (Water Sector Support, Water Resources, RBIG officials)
 - Gauteng Province
 - Limpopo Province
 - Mpumalanga Province
 - North West Province
 - PSP: UWP Consulting (Pty) Ltd in association with WRP Consulting Engineers (Pty) Ltd

25

1. Study Management Team (Central)

- Central Planning Region
 - DWA Study Project Manager: Mr Seef Rademeyer - Chief Engineer: NWRP (Central)
 - DWA Study Leader: Ms Dragana Ristic – Engineer (Production)
 - PSP: WorleyParsons in association with WRP Consulting Engineers, Muondli Consulting and Golder Associates

26

2. Reconnaissance Review of Strategies

- Northern Planning Region
 - 211 rudimentary strategies (296 water supply scheme areas)
- Central Planning Region
 - 218 rudimentary strategies (655 water supply scheme areas)
- North West Province
 - 94 rudimentary strategies (149 water supply scheme areas)

27

3. DM Summary Report

- DM Summary reports developed based on review
- Summary of demographics, water requirements and water balance per individual strategy
- Grouped per District and Local Municipality
- Navigable Excel file
- DM Summary Reports available from DWA – Regional Offices

28

3. DM Summary Report - BPDM

- Bojanala Platinum District Municipality (BPDM)

LM	Strategies	Population (2010)	In Surplus	In Deficit	Preliminary Priority (schemes)
NW371: Moretele LM	3	208 678	2	1	3
NW372: Madibeng LM	5	358 230	5	0	2
NW373: Rustenburg LM	3	463 503	2	1	2
NW374: Kgetlengrivier LM	3	24 972	2	1	2
NW375: Moses Kotane LM	11	241 483	11	0	4
Total	25	1 296 866	22	3	13

3. DM Summary Report - NMMDM

- Ngaka Modiri Molema District Municipality (NMMDM) – Strategies Applicable to the Northern Planning Region

LM	Strategies	Population (2010)	In Surplus	In Deficit	Preliminary Priority (schemes)
NW381: Ratlou LM	9	96 674	7	2	1
NW382: Tswaing LM	6	91 537	5	1	1
NW383: Mafikeng LM	5	271 646	5	0	1
NW384: Ditsobotla LM	2	62 043	2	0	0
NW385: Ramotshere Moiloa LM	13	170 904	13	0	1
Total	35	692 804	32	3	4

3. DM Summary Report - DrKKDM

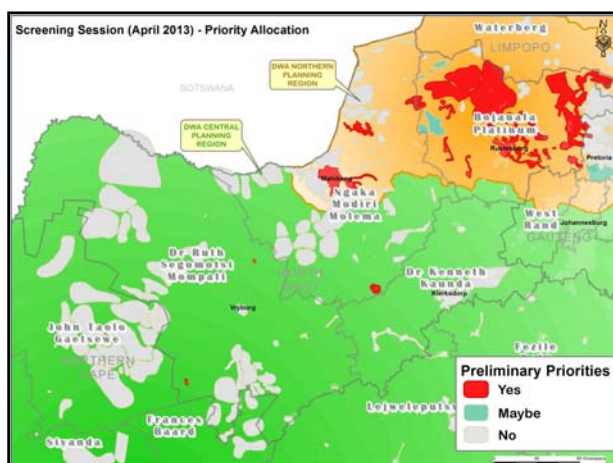
- Dr Kenneth Kaunda District Municipality (DrKKDM)

LM	Strategies	Population (2010)	In Surplus	In Deficit	Preliminary Priority (schemes)
NW401: Ventersdorp LM	1	21 198	1	0	0
NW402: Tlokwe City Council LM	1	142 440	1	0	0
NW403: City of Matlosana LM	1	281 913	1	0	0
NW404: Maquassi Hills LM	1	55 360	1	0	0
Total	4	500 911	4	0	0

3. DM Summary Report - DrRSMDM

- Dr Ruth Segomotsi Mompoti District Municipality (DrRSMDM)

LM	Strategies	Population (2010)	In Surplus	In Deficit	Preliminary Priority (schemes)
NW392: Naledi LM	2	35 219	1	1	1
NW393: Mamusa LM	4	55 259	1	3	0
NW394: Greater Taung LM	14	138 319	12	2	1
NW396: Lekwa-Teemane LM	2	47 430	2	0	0
NW397: Kagisano-Molopo LM	9	70 464	9	0	0
Total	31	346 691	25	6	2



4. Preliminary prioritisation of strategies

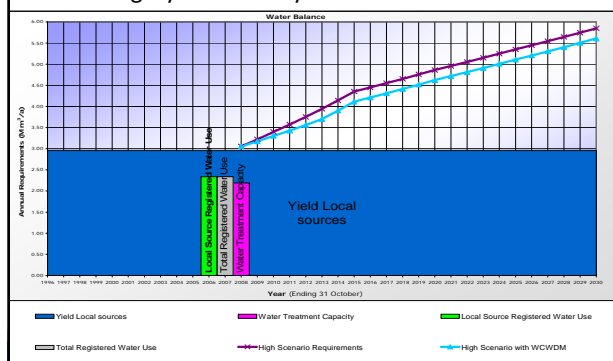
- Strategies are categorised as follows:

Water Balance Status	Category / Priority	
Town is currently in deficit	4	High
Town will be in deficit within 5 Years	3	Medium to high
Town will be in deficit in 5 to 10 years	2	Medium
Town will be in deficit after ten year or later	1	Low

34

Example

- i.e. Category 4: Currently in Deficit



Prioritisation Process

- Step 1:** Identification of Category 4 strategies (towns with a water balance currently in deficit)
- Step 2:** Eliminate towns where solutions are in an advance stage of planning or implementation (RBIG projects)
- Step 3:** Add towns where RBIG or other processes are in an early stage of planning – can still be influenced by strategies' recommendations
- Step 4:** Add any other hot spot areas identified on a national, provincial or local strategic level

36

Prioritisation Process cont.

- Key focus: **water resource** availability and quality to meet current and future water requirements
- The final selection was confirmed at screening sessions held with DWA: National Water Resource Planning (North & Central) and DWA Regional Offices
- Requesting confirmation of priorities from SSC (this workshop)

37

Updating Priority Reconciliation Strategies

- Detailed assessment of strategies according to the following themes:
 - Demographics & Economic Drivers
 - Water Requirements
 - WC/WDM
 - Infrastructure
 - Water Resources (Surface and Groundwater)
 - Water Quality
- Collate, assess data and identify gaps

38

Updating Priority Reconciliation Strategies cont.

- Develop coherent water requirement scenarios
 - Low growth scenario
 - High growth scenario
- Compile water balance diagrams (up to 2035)
- Identify potential development scenarios (management and infrastructure) for reconciliation of water requirements and water resources
- Submission of updated priority strategies to DWA
- SSC Workshop 2

39

Updating Reconciliation Strategies cont.

- Improve the level of confidence in building blocks used for scenario development
- Present the best available situation for short and long term planning
- Develop firm recommendations to be taken into account during planning (WSDP, IDP, water resources) and implementation of studies and projects
- Make a strategy applicable to the intended area of study – clustering of supply areas
- Our water: to make “some for all” a reality

40

Incorporate Comments and Finalise Reconciliation Strategies

- Incorporate comments received from SSC 2
- Include pertinent information that may impact the outcome of a strategy
- Finalise and submit reconciliation strategies
- Update the DM Summary Reports

41

Study Closure

- Signing off updated strategies by appropriate officials
- Disseminate final strategies and DM Summary Reports via DWA website
- Skills transfer workshop to DWA officials
- Compile study closure documentation – for this appointment

42

Item 8: Break-away Sessions

- Session for each DM facilitated by team member
- Confirm prioritised strategies
- Solicit information from SSC members for inclusion in the strategies

43

Break-Away Sessions (Grouping: District Municipalities)

- Group 1: Bojanala Platinum DM
- Group 2: Ngaka Modiri Molema DM
- Group 3: Dr Ruth Segomotsi Mompati DM
- Group 4: Dr Kenneth Kaunda DM

44

Item 9: Way Forward/Study Programme

- Inception (Current)
- Continuation of the Reconciliation Strategies' Development
 - Detailed assessment of prioritised strategies
 - Update strategies
 - Submission of revised strategies to DWA (continuous)
 - SSC Workshop 2 (October 2014)
 - Presentation, discussion and responses on strategies

45

Item 9: Way Forward/Study Programme

- Reconciliation Strategies' Revision and Implementation
 - Consider & incorporate comments of SSC Workshop 2
 - Prepare final draft reconciliation strategies
 - Update DM Summary Reports

46

Item 9: Way Forward/Study Programme cont.

- Study Closure
 - Signing off updated strategies by appropriate officials
 - Disseminate final strategies and DM Summary Reports via DWA website
- End of this appointment: October 2015

47

Thank You

- | | |
|---|---|
| <ul style="list-style-type: none"> • Northern Planning Region <ul style="list-style-type: none"> – For enquiries, contact: <ul style="list-style-type: none"> • DWA Study Leader: Mr Tendani Nditwani • Tel: +27 (0) 12 336-8189 • Email: Nditwanit@dwa.gov.za – Or <ul style="list-style-type: none"> • PSP Deputy Study Leader: Ms Monja Esterhuizen • Tel: +27 (0) 12 424 9709 • Email: monjae@uwp.co.za | <ul style="list-style-type: none"> • Central Planning Region <ul style="list-style-type: none"> – For enquiries, contact: <ul style="list-style-type: none"> • DWA Study Leader: Ms Dragana Ristic • Tel: +27 (0) 12 336-8302 • Email: Risticd@dwa.gov.za – Or <ul style="list-style-type: none"> • PSP Study Leader: Mr Pieter van Rooyen • Tel: +27 (0) 12 346 3496 • Email: pieterv@wvp.co.za |
|---|---|

Study Website: <http://www.dwa.gov.za/projects.aspx>
(go to All Town Strategies – Strategy Portal)